



app  
2/10/24



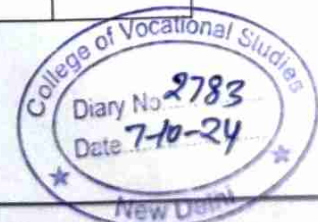
# कॉलेज ऑफ वोकेशनल स्टडीज College of Vocational Studies (दिल्ली विश्वविद्यालय) (University of Delhi)

संदर्भ संख्या  
Ref. No. CVS

दिनांक  
Dated

## 2.7.1 supporting documents SSS Questionnaire

Sr.No.	Question	% of student satisfaction		
		Fully satisfied	Moderately satisfied	Unsatisfied
1	The syllabus is fully covered in the class.	54.5%	40.60%	4.88 %
2	How well did the teachers prepare for the classes?	59.64%	36.71%	3.63%
3	How well were the teachers able to communicate?	36.46%	54.76%	8.77%
4	The teacher's approach to teaching can best be described as	48.24%	47.86%	3.88%
5	Fairness of the internal evaluation process by the teachers.	73.05%	23.30%	3.63%
6	Was your performance in assignments discussed with you?	54.88%	34.83%	10.27%
7	The institute takes active interest in promoting internship, student exchange, field visit opportunities for students	37.71%	41.47%	20.80%
8	The teaching and mentoring process in your institution facilitates you in cognitive, social and emotional growth.	59.02%	27.94%	13.03%
9	The institution provides multiple opportunities to learn and grow.	45.36%	35.83%	18.79%
10	Teachers inform you about your expected competencies, course outcomes and programme outcomes.	50.12%	37.59%	6.26%



11	Your mentor does a necessary follow-up with an assigned task to you.	53.63%	20.30%	26.06%
12	The teachers illustrate the concepts through examples and applications.	67.41%	30.07%	2.50%
13	The teachers identify your strengths and encourage you with providing right level of challenges.	46.24%	38.22%	15.33%
14	Teachers are able to identify your weaknesses and help you to overcome them.	39.09%	43.73%	17.16%
15	The institution makes effort to engage students in the monitoring, review and continuous quality improvement of the teaching learning process.	43.85%	37.59%	18.54%
16	The institute/ teachers use student centric methods, such as experiential learning, participative learning and problem-solving methodologies for enhancing learning experiences.	49.37%	39.47%	11.15%
17	Teachers encourage you to participate in extracurricular activities.	41.72%	39.47%	11.15%
18	Efforts are made by the institute/ teachers to inculcate soft skills, life skills and employability skills to make you ready for the world of work.	47.11%	39.34%	13.53%

From  
Animesh King  
(Department of  
Management)





7/10/24



# कॉलेज ऑफ वोकेशनल स्टडीज College of Vocational Studies (दिल्ली विश्वविद्यालय) (University of Delhi)

संदर्भ संख्या  
Ref. No. CVS

दिनांक  
Dated

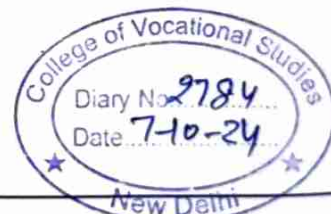
## Supporting documents for 2.7.1

S.no.	Content	Page Number
1	link on college website	1
2	Questionnaire	2
3	responses	4 - 13

The following Google form link was shared and based on the responses received the feedback percentages were calculated.

**Link:** <https://forms.gle/yvZMSDP5E38Fxaj46>

On analysing the survey, it is observed that the students are very satisfied with the coverage of syllabus in the classroom. Students appreciate the fact that their performance in assignments/presentations is discussed with them and teachers inform them about expected competencies, course outcomes and program outcomes. Teachers identifies students' strengths and encourage them in providing right level of challenges. The college/teachers use student centric methods such as experimental learning, participative learning and problem-solving methodologies for enhancing learning experiences. Students are satisfied about the fact that the teachers encourage them to participate in extracurricular activities. Students are satisfied by the efforts that are made by college/teachers to inculcate soft skills/ life skills and employability skills to make students ready for the world of work. The teaching and mentoring process in the institution facilitates students in cognitive, social and emotional growth and students are pretty satisfied by the same. Some students have expressed concerns regarding the usage of ICT tools by teachers. Considering the feedback received by the students, the college is making efforts to encourage the faculty to make an extensive usage of ICT tools. The detailed survey report follows.



Sr. No.	Questions
1	What degree program are you pursuing now?
2	What subject area are you currently pursuing?
3	How much of the syllabus was covered in the class?
4	How well did the teachers prepare for the classes?
5	How well were the teachers able to communicate?
6	The teacher's approach to teaching can best be described as
7	Fairness of the internal evaluation process by the teachers.
8	Was your performance in assignments discussed with you?
9	The institute takes active interest in promoting internship, student exchange, field visit opportunities for students
10	The teaching and mentoring process in your institution facilitates you in cognitive, social and emotional growth.
11	The institution provides multiple opportunities to learn and grow.
12	Teachers inform you about your expected competencies, course outcomes and programme outcomes.
13	Your mentor does a necessary follow-up with an assigned task to you.
14	The teachers illustrate the concepts through examples and applications.
15	The teachers identify your strengths and encourage you with providing right level of challenges.
16	Teachers are able to identify your weaknesses and help you to overcome them.
17	The institution makes effort to engage students in the monitoring, review and continuous quality improvement of the teaching learning process.
18	The institute/ teachers use student centric methods, such as experiential learning, participative learning and problem-solving methodologies for enhancing learning experiences.
19	Teachers encourage you to participate in extracurricular activities.
20	Efforts are made by the institute/ teachers to inculcate soft skills, life skills and employability skills to make you ready for the world of work.
21	What percentage of teachers use ICT tools such as LCD projector, Multimedia, etc. while teaching.
22	The overall quality of teaching-learning process in your institute is very good.
23	Give three observation / suggestions to improve the overall teaching – learning experience in your institution.

From  
Animesh Mishra  
Department of Management

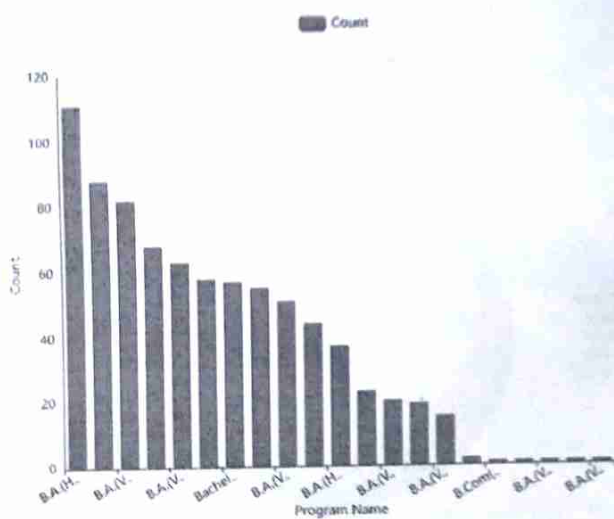
## Students Satisfaction Survey- A quick analysis

### Gender Distribution



- **Male: 56.8%**
- **Female: 42.7%**
- **Other: 0.5%**

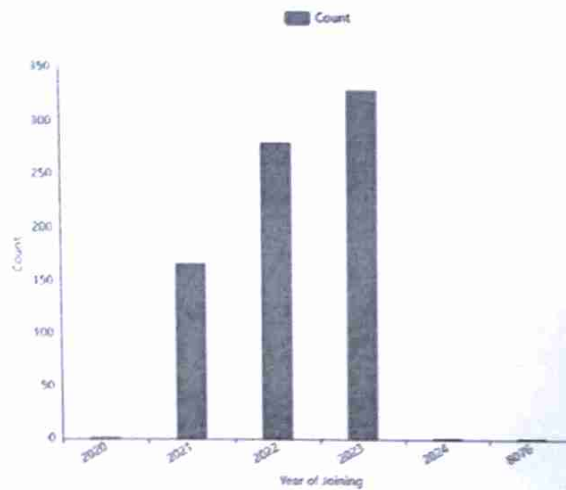
### Program Name Distribution



- **B.A.(Hons.) History: 111 students**
- **B.Sc. (Hons.) Computer Science: 88 students**
- **B.A.(VS) Human Resource Management: 82 students**
- **B.A.(Hons.) Economics: 68 students**
- **B.A.(VS) Office Management and Secretarial Practice: 63 students**



## Year of Joining Distribution



- **2020:** 1 student
- **2021:** 167 students
- **2022:** 280 students
- **2023:** 329 students
- **2024:** 1 student

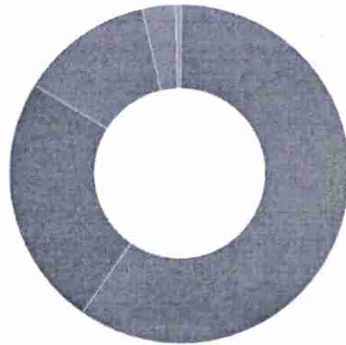
## Syllabus Coverage Distribution



- **85 to 100%:** 435 students
- **70 to 84%:** 240 students
- **55 to 69%:** 84 students
- **30 to 54%:** 26 students
- **Below 30%:** 13 students

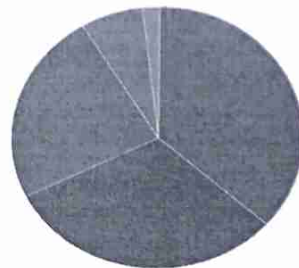
### Teacher Preparation Distribution

■ Satisfacto... ■ Thoroughly ■ Poorly ■ Indifferen... ■ Won't te...



- **Satisfactorily:** 476 students
- **Thoroughly:** 192 students
- **Poorly:** 101 students
- **Indifferently:** 25 students
- **Won't teach at all:** 4 students

### Teacher Communication Distribution



■ Always eff...  
■ Sometimes...  
■ Just satisf...  
■ Generally...  
■ Very poor...

- **Always effective:** 291 students
- **Sometimes effective:** 249 students
- **Just satisfactorily:** 188 students
- **Generally ineffective:** 55 students
- **Very poor communication:** 15 students

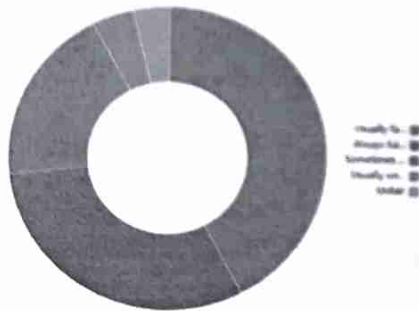
### Teacher Approach Distribution to teaching

Very good Good Fair Excellent Poor



- **Very good:** 257 students
- **Good:** 250 students
- **Fair:** 132 students
- **Excellent:** 128 students
- **Poor:** 31 students

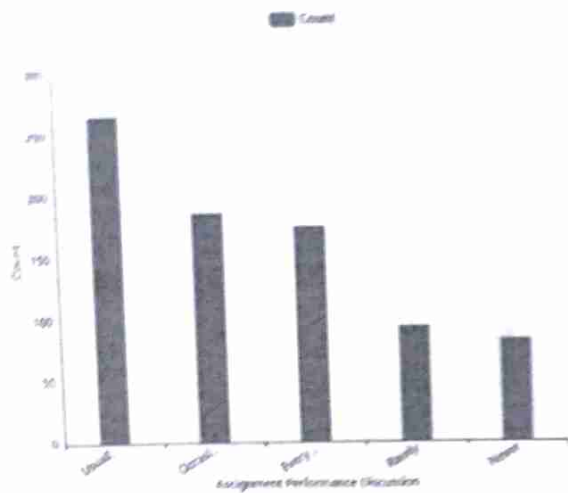
### Fairness of internal evaluation process by the teachers



- **Usually fair:** 336 students
- **Always fair:** 247 students
- **Sometimes unfair:** 152 students
- **Usually unfair:** 34 students
- **Unfair:** 29 students

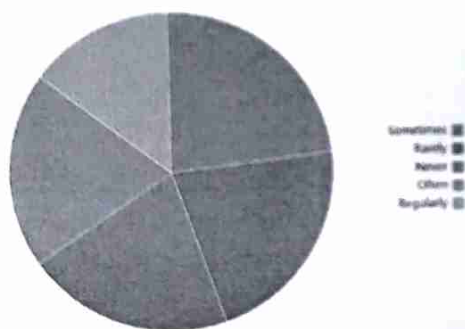


## Assignment performance in assignments discussed with you



- **Usually:** 264 students
- **Occasionally/Sometimes:** 185 students
- **Every time:** 174 students
- **Rarely:** 93 students
- **Never:** 82 students

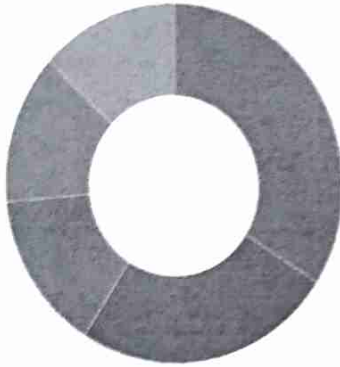
**The institute takes active interest in promoting internship, student exchange, field visit opportunities for students**



- **Sometimes:** 185 students
- **Rarely:** 172 students
- **Never:** 166 students
- **Often:** 159 students
- **Regularly:** 116 students

## The teaching and mentoring process in your institution facilitates you in cognitive, social and emotional growth

■ Moderately ■ Very well ■ Marginally ■ Significantly ■ Not at all



- **Moderately:** 270 students
- **Very well:** 201 students
- **Marginally:** 116 students
- **Significantly:** 107 students
- **Not at all:** 104 students

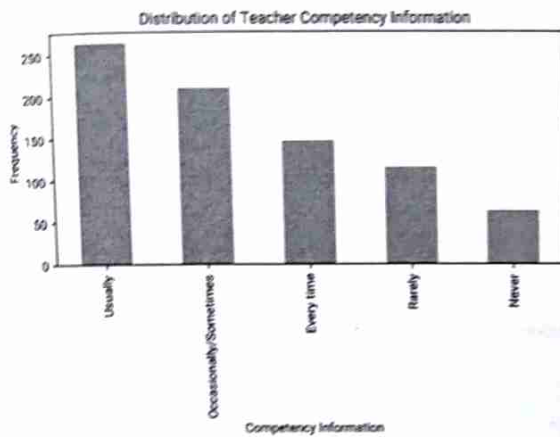
## The institution provides multiple opportunities to learn and grow.



■ Neutral  
■ Agree  
■ Strongly agree  
■ Disagree  
■ Strongly disagree

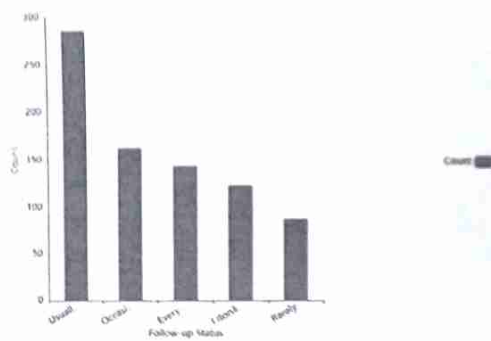
- **Neutral:** 286 students
- **Agree:** 251 students
- **Strongly agree:** 111 students
- **Disagree:** 101 students
- **Strongly disagree:** 49 students

## Teachers inform you about your expected competencies, course outcomes and programme outcomes



- **Usually:** 250 students
- **Occasionally/Sometimes:** 200 students
- **Every time:** 150 students
- **Rarely:** 100 students
- **Never:** 50 students

Your mentor does a necessary follow-up with an assigned task to you.



- **Usually:** 285 students
- **Occasionally/Sometimes:** 162 students
- **Every time:** 143 students
- **I don't have a mentor:** 122 students
- **Rarely:** 86 students



**The teachers illustrate the concepts through examples and applications.**

- **Usually:** 304 students
- **Every time:** 234 students
- **Occasionally/Sometimes:** 166 students
- **Rarely:** 74 students
- **Never:** 20 students

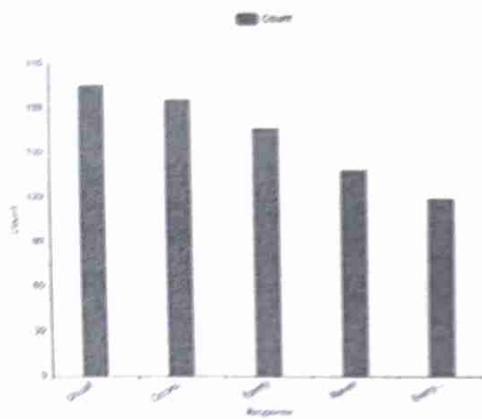
**The teachers identify your strengths and encourage you with providing right level of challenges**



Reasonably  
Partially  
Fully  
Unable to  
Slightly

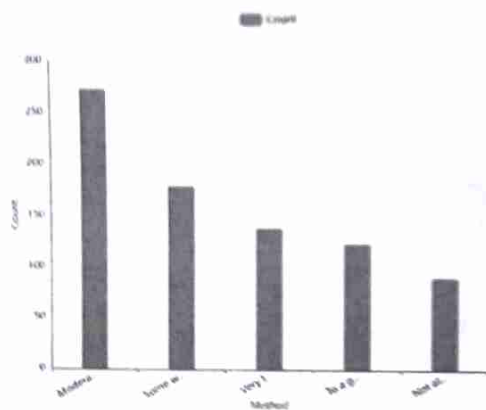
- **Reasonably:** 233 students
- **Partially:** 189 students
- **Fully:** 136 students
- **Unable to:** 124 students
- **Slightly:** 116 students

Teachers are able to identify your weaknesses and help you to overcome them.



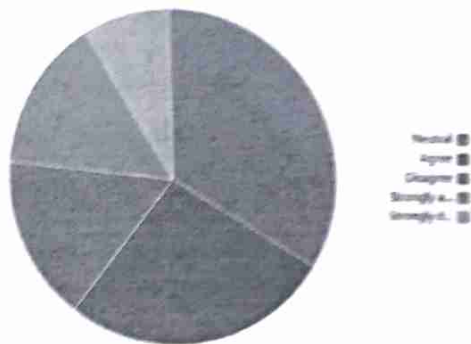
- **Usually:** 194 students
- **Occasionally/Sometimes:** 184 students
- **Rarely:** 165 students
- **Never:** 137 students
- **Every time:** 118 students

The institute/ teachers use student centric methods, such as experiential learning, participative learning and problem-solving methodologies for enhancing learning experiences.



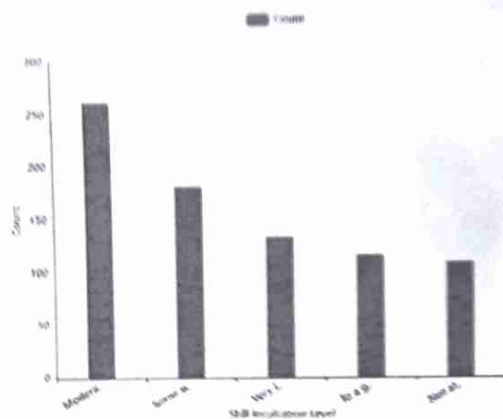
- **Moderate:** 272 students
- **Somewhat:** 178 students
- **Very little:** 137 students
- **To a great extent:** 122 students
- **Not at all:** 89 students

Teachers encourage you to participate in extracurricular activities.



- **Neutral:** 270 students
- **Agree:** 215 students
- **Disagree:** 128 students
- **Strongly agree:** 118 students
- **Strongly disagree:** 67 students

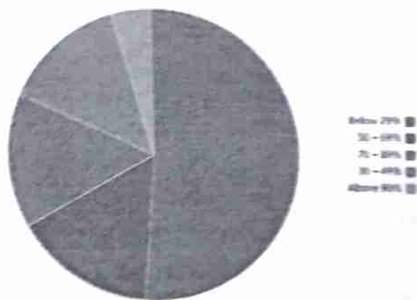
Efforts are made by the institute/ teachers to inculcate soft skills, life skills and employability skills to make you ready for the world of work.



- **Moderate:** 261 students
- **Somewhat:** 181 students
- **Very little:** 133 students
- **To a great extent:** 115 students
- **Not at all:** 108 students

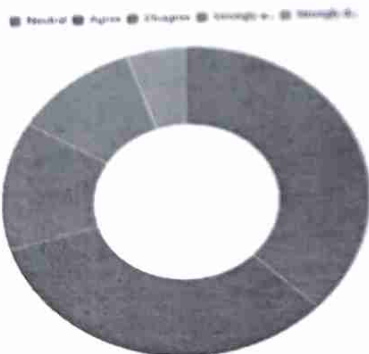


What percentage of teachers use ICT tools such as LCD projector, Multimedia, etc. while teaching.



- Below 29%: 409 students
- 50 - 69%: 125 students
- 70 - 89%: 119 students
- 30 - 49%: 110 students
- Above 90%: 35 students

The overall quality of teaching-learning process in your institute is very good.



- Neutral: 300 students
- Agree: 262 students
- Disagree: 107 students
- Strongly agree: 88 students
- Strongly disagree: 41 students